



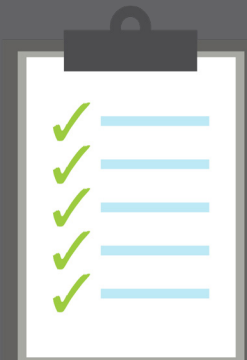
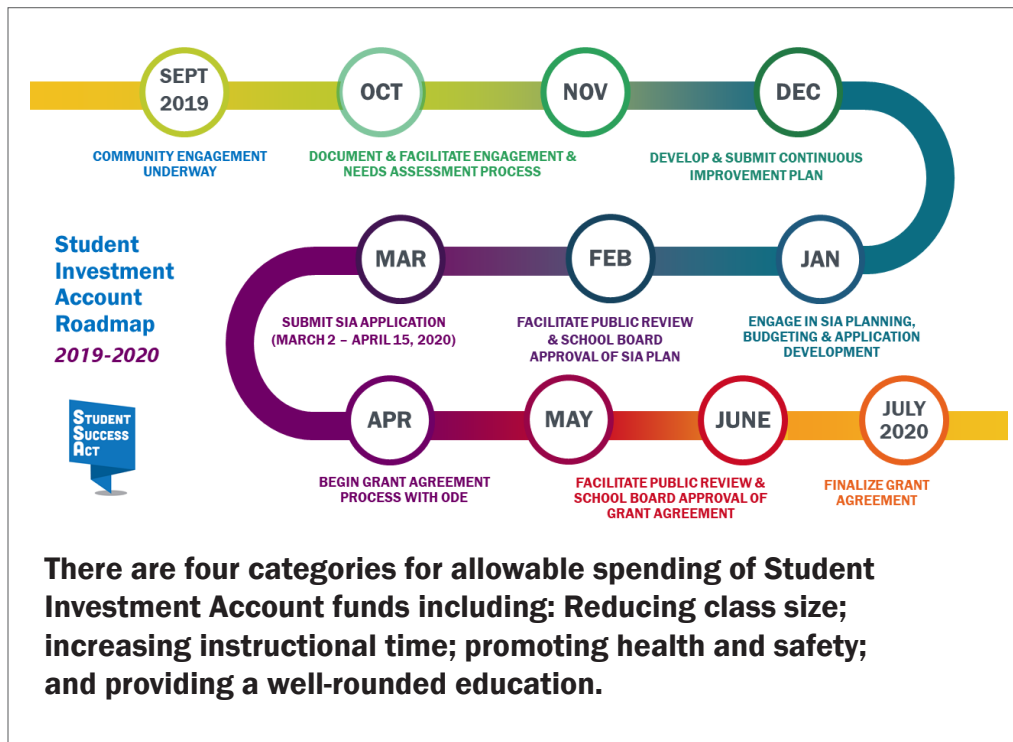
# You shared. We listened. Now it's time to take ACTION.

The Student Investment Account represents a historic commitment to our students. Learn more about how Days Creek Charter School will use this investment to provide our students with the best education possible.

When implemented for the 2020–21 academic year, the Student Investment Account will provide an investment directly to Oregon school districts and eligible charter schools. The Student Investment Account is a non-competitive grant program, and the purpose is to:

1. Meet students' mental or behavioral health needs.
2. Increase academic achievement for students, including reducing academic disparities for historically and currently underserved youth.

Days Creek Charter School is expected to receive an estimated \$242,757 to put toward these efforts. Through our engagement work, we have drafted goals that reflect our community's valuable feedback and align with the mission of the Student Success Act.



## OUR ENGAGEMENT WORK AT A GLANCE

Days Creek collected data from a variety of methods, including surveys, empathy conversations, small group discussions, face-to-face conversations and meetings, and school assemblies.

**90%**

Faculty/staff participated in engagement process

**12**

Continuous Improvement Plan and SSA engagement meetings

**16**

Community groups and student focal groups engaged



## COMMUNITY PARTNERS

Douglas Education Service District ■ The Ford Family Foundation ■ Charter School Board Members ■ Institute for Research and Reform in Education ■ Confederation of Oregon School Administrations ■ Charter School faculty/staff, students and parents ■ Community members.



# SUPERINTENDENT'S MESSAGE

The information we have collected throughout this engagement



process has been — and will continue to be — invaluable in our work to improve the education and well-being of all of our students. Days Creek Charter School

is grateful to our many community

partners for their support in ensuring our efforts align with Student Success Act/Student Investment Account goals. We are also grateful for all of the feedback we have received from students, families, staff and faculty. This feedback will be directly integrated into our planning and is reflected in the goals we are setting for our school and students.

## THEMES AND TRENDS

There were consensus and a mutual agreement among community engagement participants about the need to view goals through the equity lens and that decisions had to consider what was best for students.

*Equity Lens: The district shall provide multiple pathways to success in order to meet the needs of the diverse student body and shall actively encourage, support and expect high academic achievement for each student.*

*The district shall provide materials and assessments that reflect the diversity of students and staff and are geared toward the understanding and appreciation of culture, class, language, ethnicity, poverty, ability and other differences that contribute to the uniqueness of each student and staff member.*

## OUR PROPOSED GOALS

- All students in grades (3-11) will improve reading and math proficiency as measured by Smarter Balanced Interim assessment results.
- All students in (K-12) will receive personalized academic, social emotional and behavioral guidance that helps every student achieve positive growth.
- All students in (K-12) will treat each other well and report a sense of belonging, identity, and safety at school.
- All students in grades (3-6) will have access to more classroom space for learning and instruction.

LEARN MORE: [www.dayscreek.k12.or.us](http://www.dayscreek.k12.or.us)



### DAYS CREEK CHARTER SCHOOL SNAPSHOT

# 195

Total Enrollment

# 71%

Free/Reduced Price Lunch

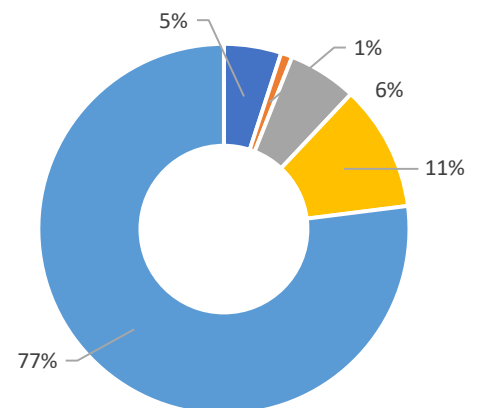
# 15%

Students with Disabilities

# 19%

Mobile Students

### STUDENT DEMOGRAPHICS



- American Indian/Alaska Native
- Native Hawaiian/Pacific Islander
- Hispanic/Latino
- Multiracial
- White